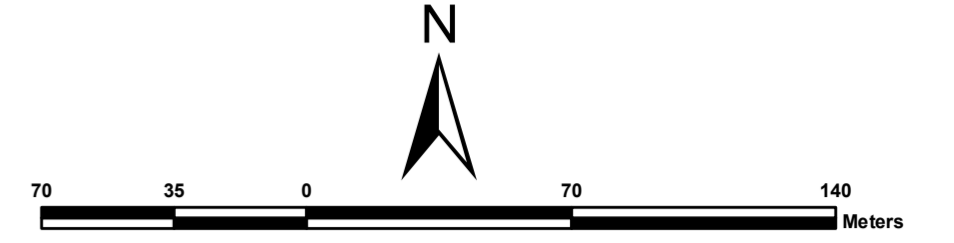


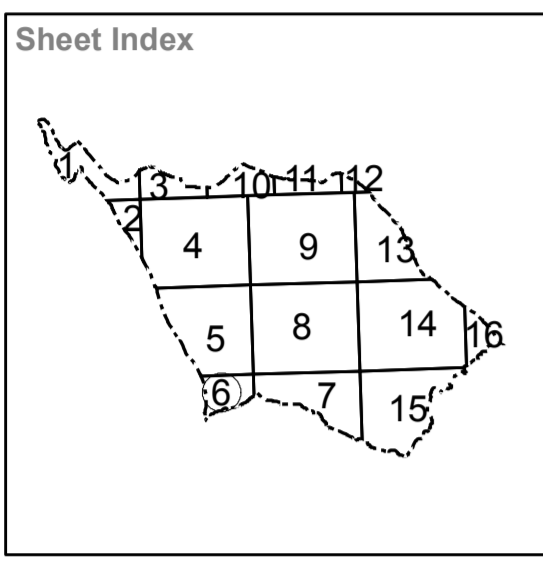
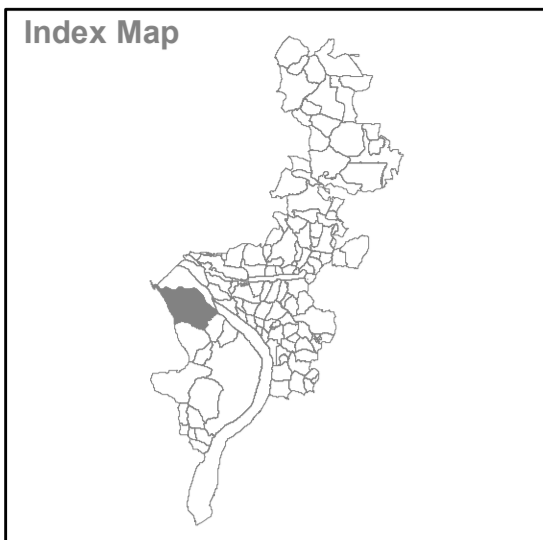
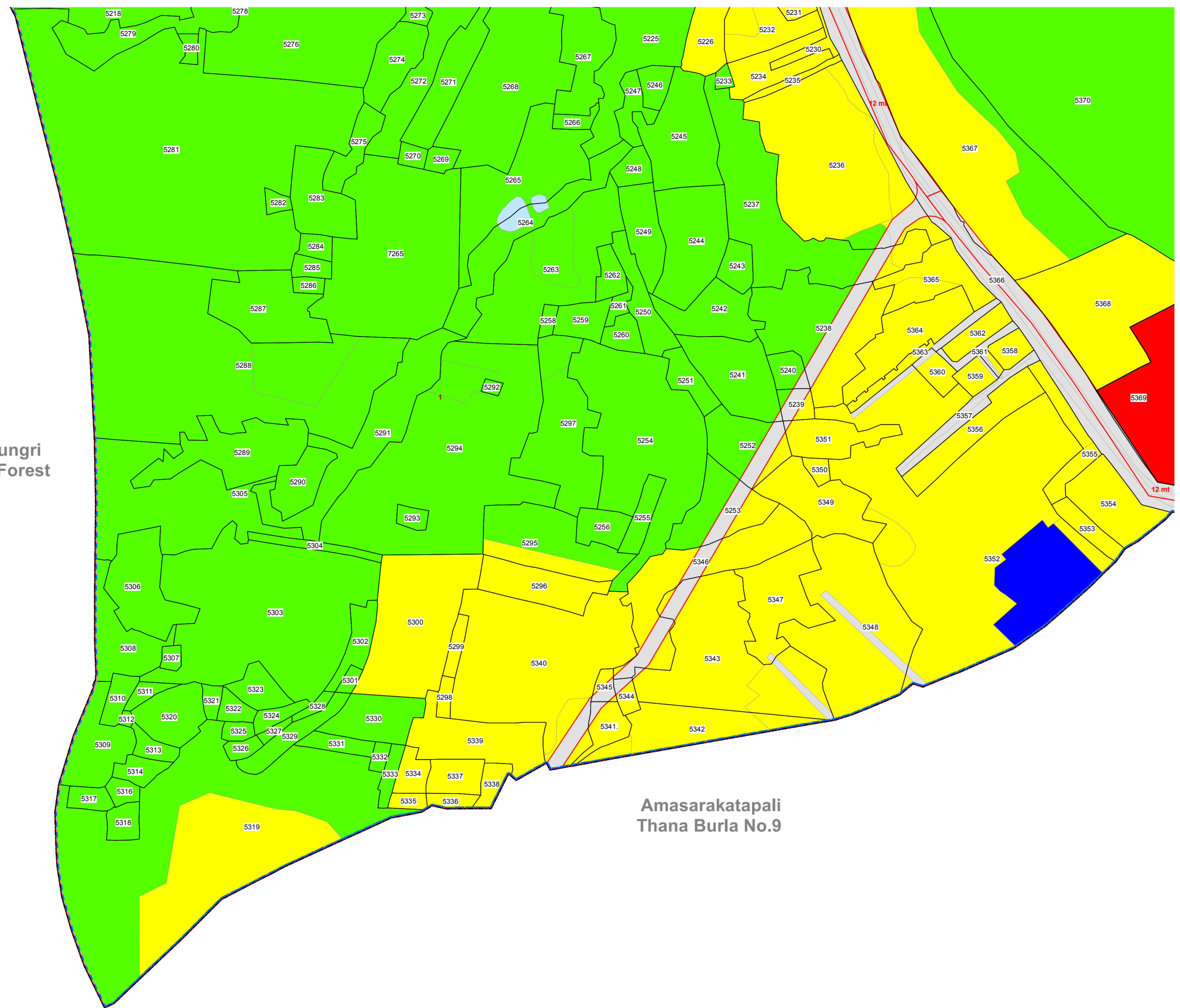
# PROPOSED LANDUSE MAP Sambalpur Development Authority (SDA)

Mouza: Burla; P.S. : Burla No.1 (6/16)



## LEGEND

- Residential Use Zone
- Commercial Use Zone
- Industrial Use Zone
- Public and Semi-Public Use Zone
- Utilities & Services Use Zone
- Recreational (& Open Space) Use Zone
- Transportation Use Zone
- Agriculture & Allied Use Zone
- Water Bodies Use Zone
- 
- 
- 
- 
- 
- 
- 
- 
- 
- 
- 
- 
- 
- 
- 
- 
- 
- 



Chandlidungri  
Reserved Forest

Amasarakatapali  
Thana Burla No.9

<p><b>Source/ Database Used :</b></p> <p>Satellite Data : World View-1 (PAN)                  Cadastral Data : Year-1981-82                  Ground Truthing : August 2010</p>	<p><b>Village Name :</b> Burla  <b>Sheet No.6</b></p> <p><b>Tahasil Name :</b> Sambalpur</p>
<p><b>Guideline :</b> Urban GIS Database Development for                  CDP/ Master Plan Preparation</p> <p>Directorate of Town Planning                  Deptt. of Housing &amp; Urban Development                  Govt. of Orissa</p>	<p><b>Prepared by :</b></p> <p><b>Gujarat Industrial and                  Technical Consultancy                  Organisation, Ahmedabad</b></p> <p><b>Sambalpur Development                  Authority, Sambalpur</b></p>