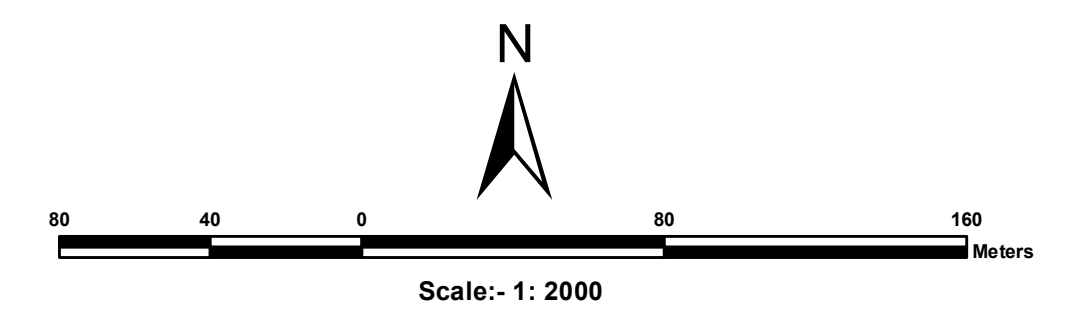
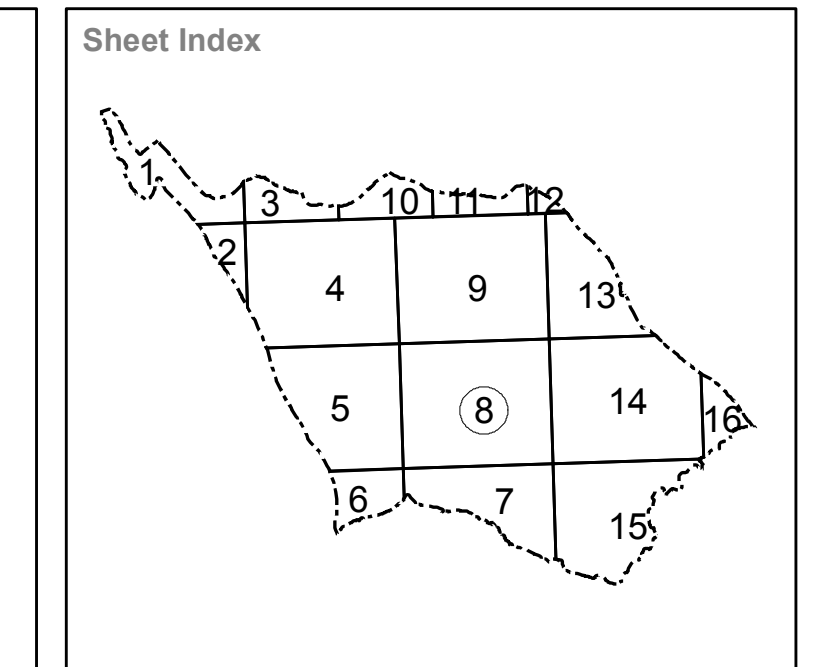
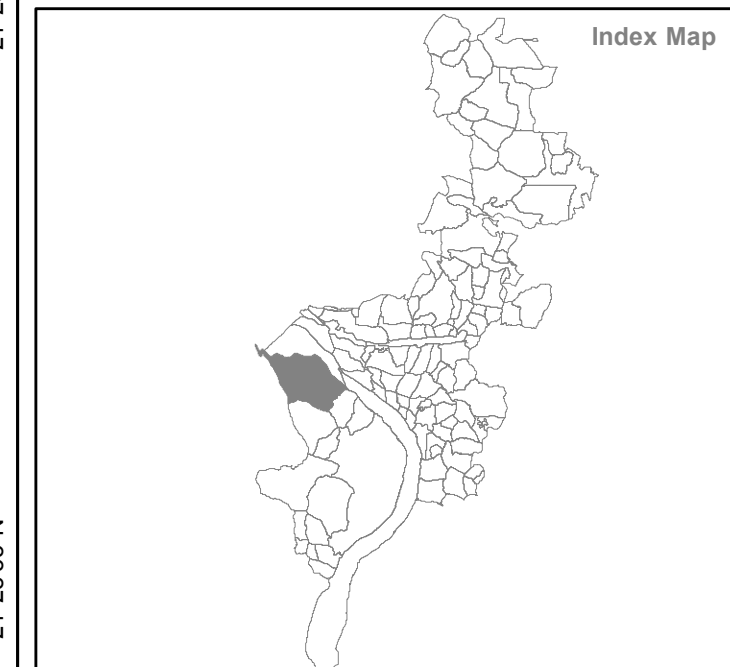
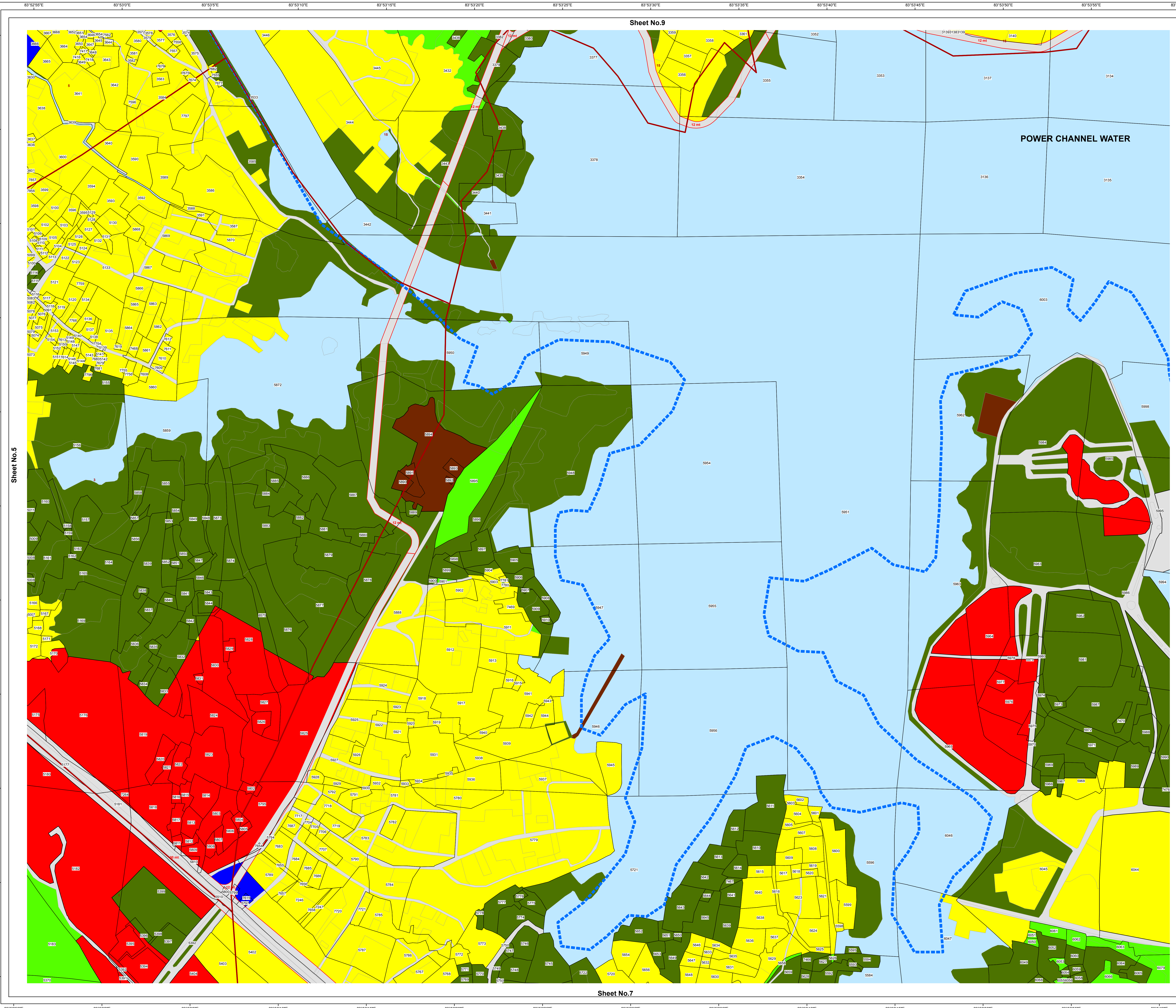


**PROPOSED LANDUSE MAP**  
**Sambalpur Development Authority (SDA)**  
 Mouza: Burla; P.S.: Burla No.1 (8 / 16)



**LEGEND**

- Residential Use Zone
- Commercial Use Zone
- Industrial Use Zone
- Public and Semi-Public Use Zone
- Utilities & Services Use Zone
- Recreational ( & Open Space) Use Zone
- Transportation Use Zone
- Agriculture & Allied Use Zone
- Water Bodies Use Zone
- Railwayline
- Existing Road
- Existing Bridge
- Proposed Road
- Proposed Bridge
- Comprehensive Development Plan (SDA) Boundary
- Municipal Boundary
- Mouza Boundary
- Zone Boundary
- Ward Boundary
- Revenue Settlement Boundary
- Village Road
- Plot Boundary
- Dosimali
- Trisimali
- Mustakilchand
- Railway Pillar/Other Pillar
- Government Land



Source Database Used :  
 Satellite Data : World View-1 (PAN)  
 Cadastral Data : Year-1981-82  
 Ground Truthing : August 2010

Village Name : Burla  
 Sheet No.8  
 Tahasil Name : Sambalpur  
 Prepared by :  
**Gujarat Industrial and Technical Consultancy Organisation, Ahmedabad**  
 Directorate of Town Planning  
 Deptt. of Housing & Urban Development  
 Govt. of Orissa  
**Sambalpur Development Authority, Sambalpur**

83°52'55"E 83°53'0"E 83°53'5"E 83°53'10"E 83°53'15"E 83°53'20"E 83°53'25"E 83°53'30"E 83°53'35"E 83°53'40"E 83°53'45"E 83°53'50"E 83°53'55"E 83°54'0"E

83°52'55"E 83°53'0"E 83°53'5"E 83°53'10"E 83°53'15"E 83°53'20"E 83°53'25"E 83°53'30"E 83°53'35"E 83°53'40"E 83°53'45"E 83°53'50"E 83°53'55"E 83°54'0"E

Sheet No.5

Sheet No.9

Sheet No.7

Sheet No.14